

Memory

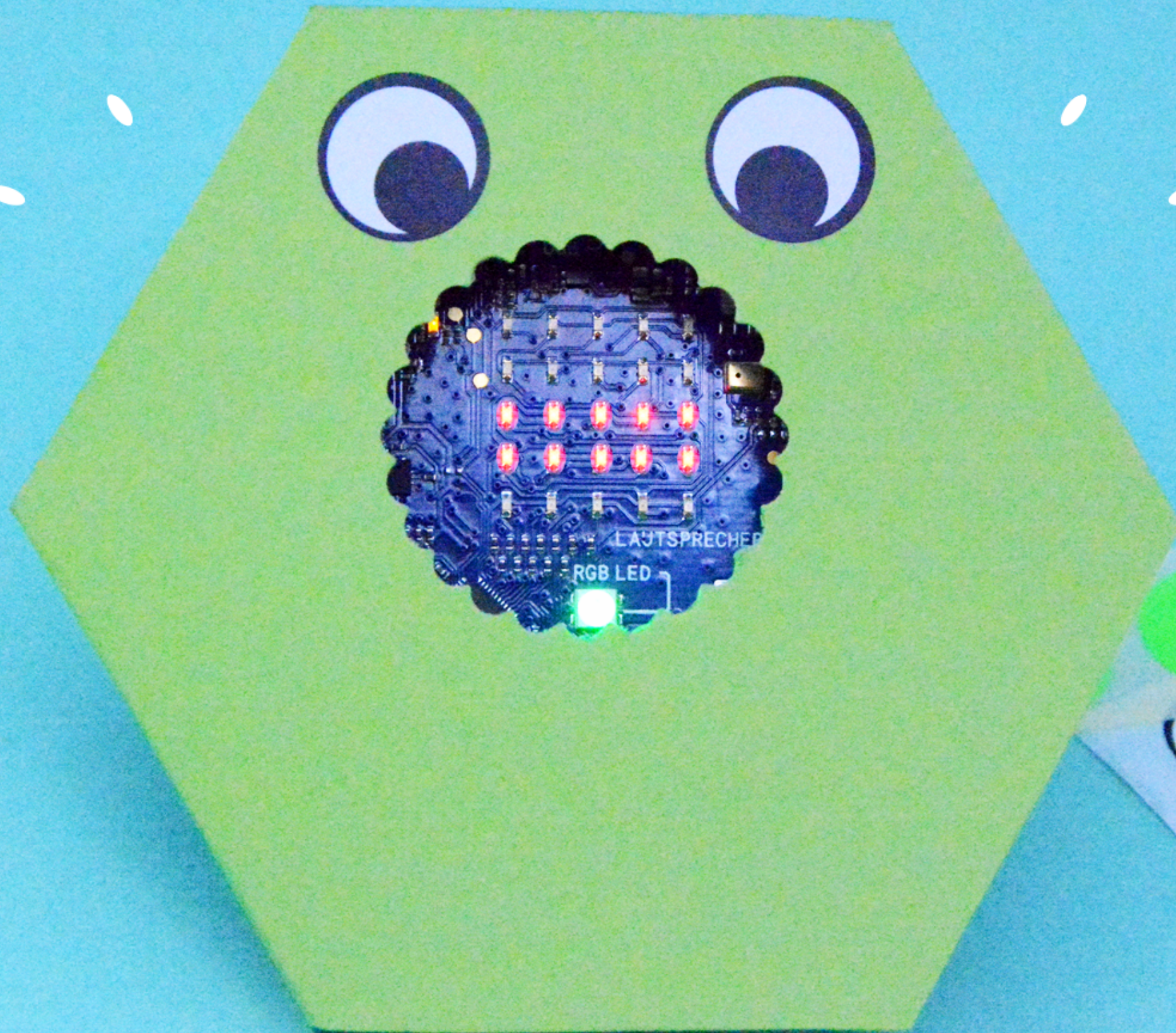


1

2

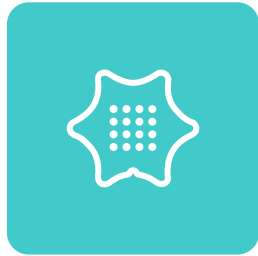
3

MEMORY

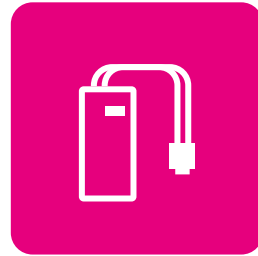




What you will need:



Calliope mini



Batteries



Template



Paper



Scissors



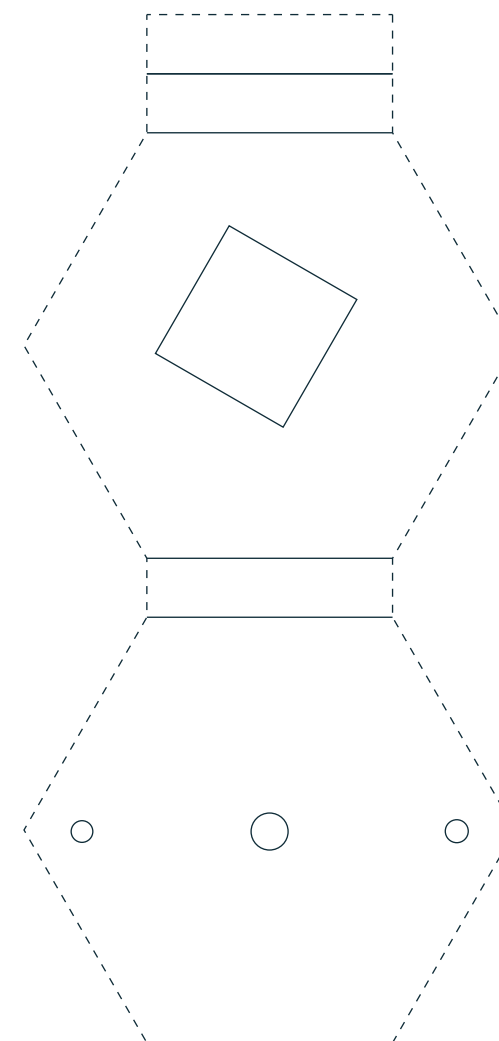
Tape



Rubber band

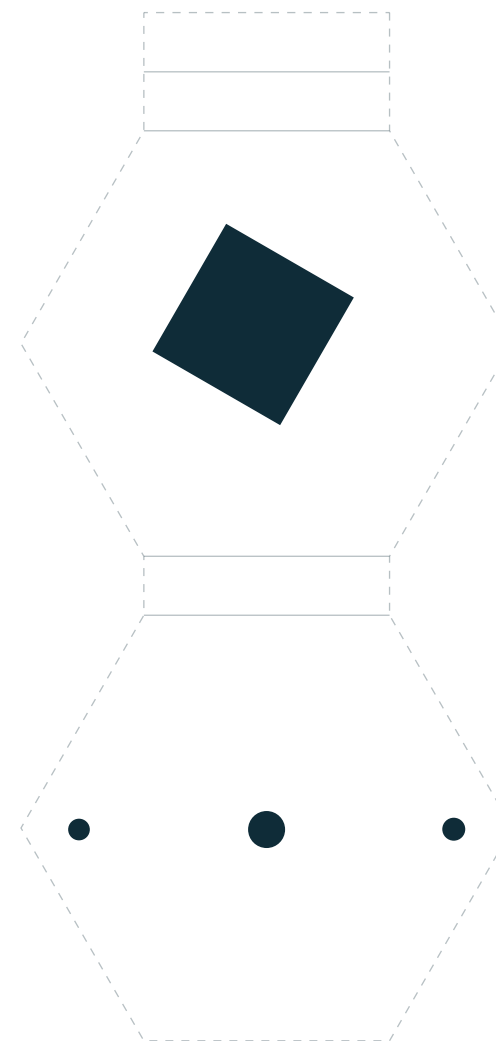


Cut the template.



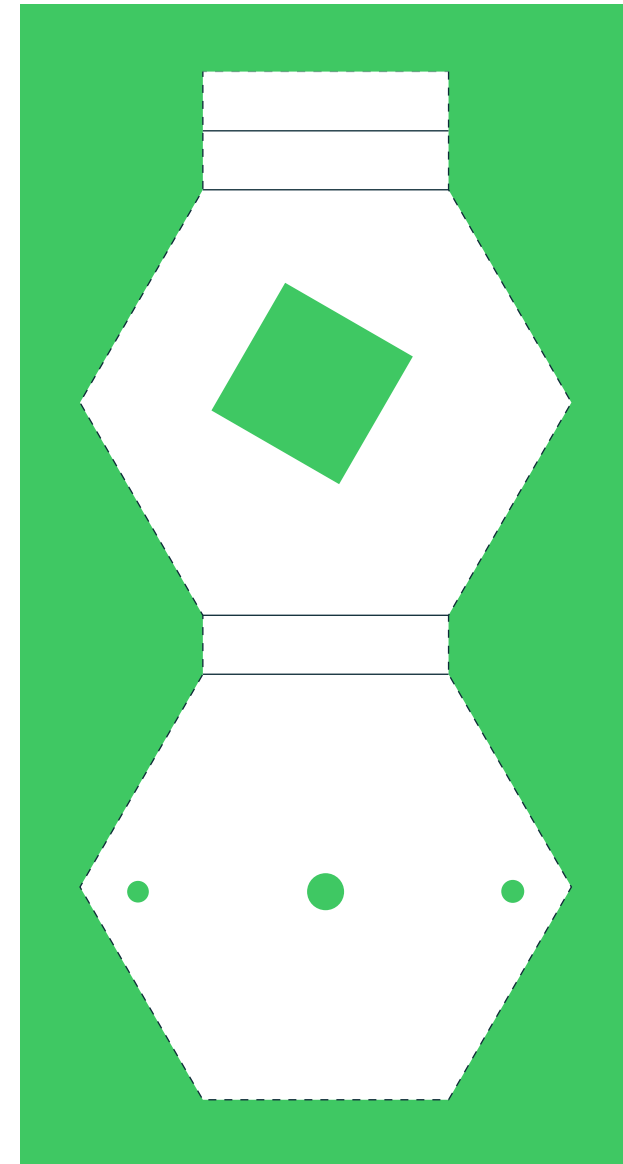


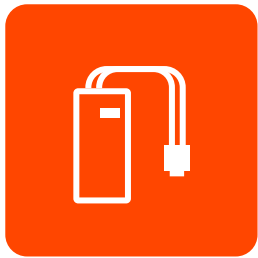
Cut or punch the window and the holes.



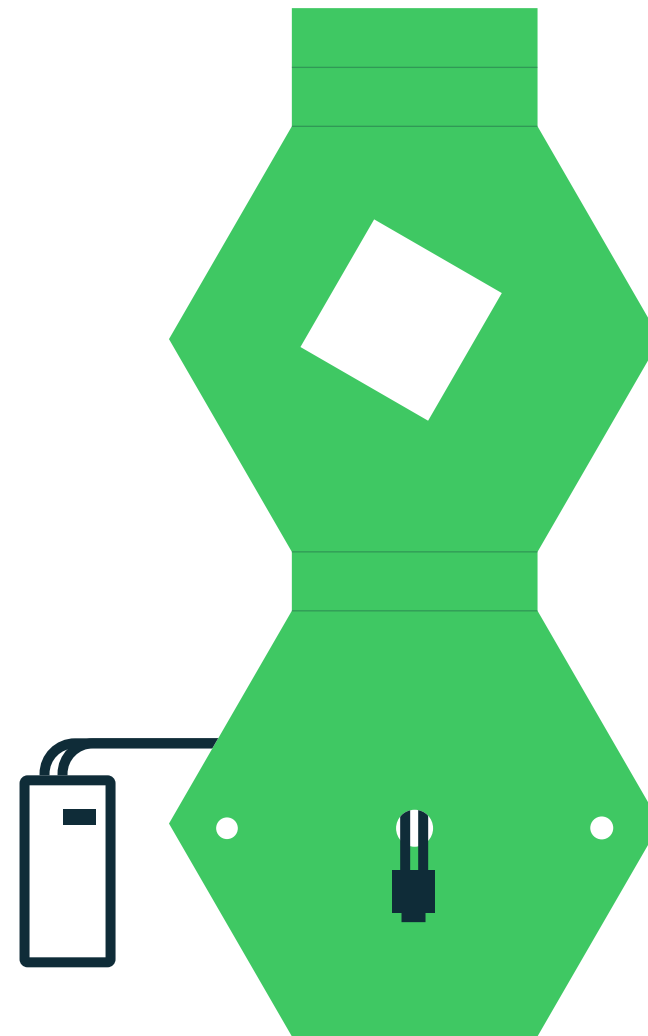


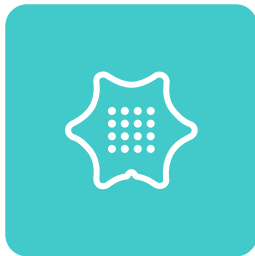
Pause the template on a colored paper.
Also cut the window and the holes.



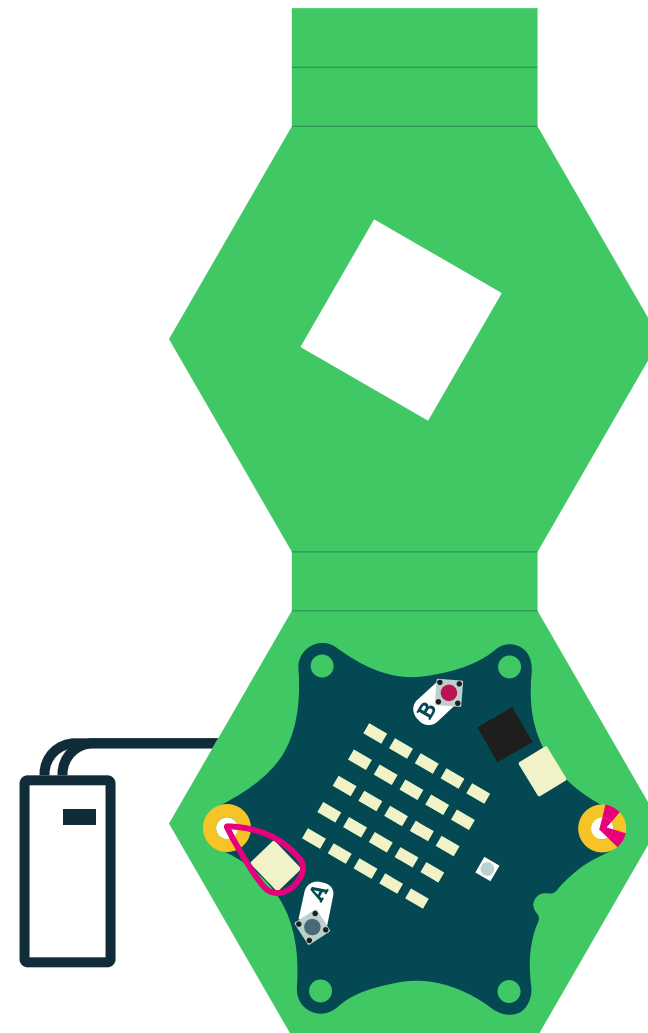


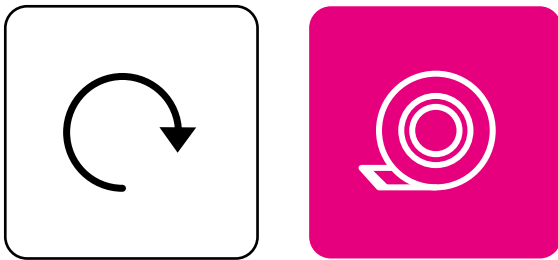
Lead the battery holder cable from the rear through the middle of the three holes.



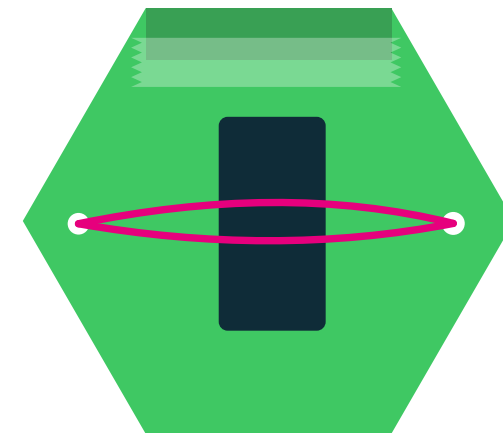


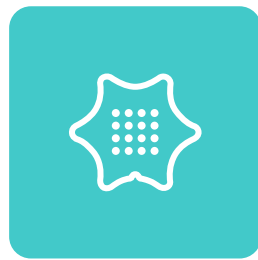
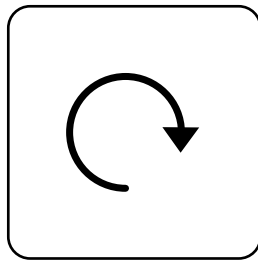
Attach your Calliope mini to the paper with a rubber band. Lead the rubber band through the two free holes in the paper and through two pins of the Calliope mini.



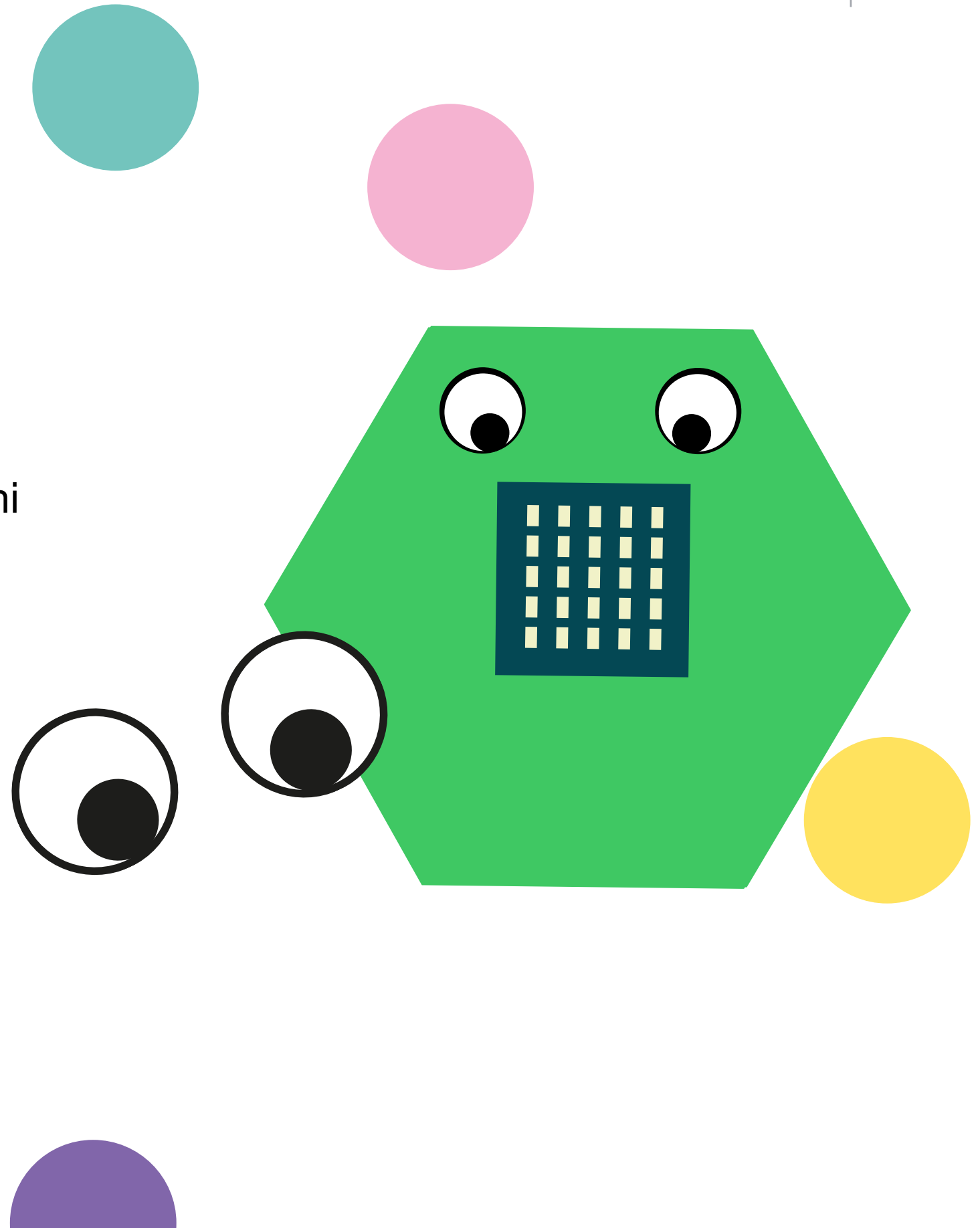


Fold the paper together so that the Calliope mini is in the middle and the 5x5 display is visible through the window. Then glue the upper tab to the back of the paper. The battery compartment is attached to the back with the rubber band.





Finally, decorate your Calliope mini case.



TEMPLATE

