

# TROUBLESHOOTING (Bluetooth)



# CALLIOPE APP

## IMPORTANT!

Unfortunately, there is a problem with the transfer of data in MakeCode at the moment and error messages occur. An upcoming update will fix this.

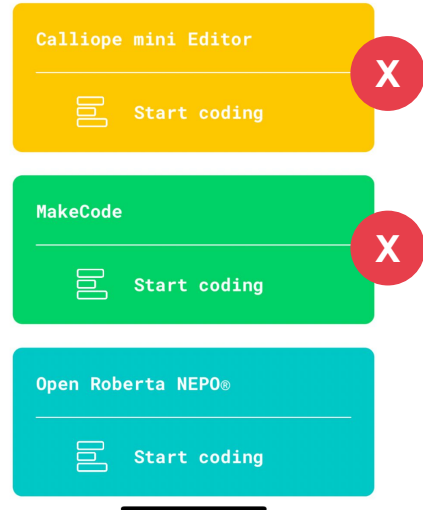
We currently recommend mobile programming with the **Open Roberta Lab**.



CALLIOPE

< Start coding Help!

Select your favorite editor and start coding!



# ERROR NOTICE

1. Bluetooth disconnect

GUIDE

2. Reconnect

GUIDE



CALLIOPE



Übertragung  
fehlgeschlagen

Error DFU Service  
not found

OK

# FEHLERMELDUNG

Bluetooth disconnect

GUIDE



CALLIOPE



Flashing failed

Error failed to connect  
to peripheral

71731B82-9E7D-70DF-2591  
-3F078DC6215E

OK

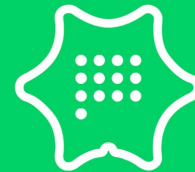
# IT DOESN'T GO ON?

Reconnect

GUIDE



CALLIOPE



Searching for  
Calliope mini

Abort

# STEP BY STEP

RECONNECTION FAILED AFTER TRANSFER  
IN THE APP

---

1

RECONNECT  
CALLIOPE MINI

---

2

ID PATTERN ON THE CALLIOPE MINI  
CANNOT BE ACCESSED

3

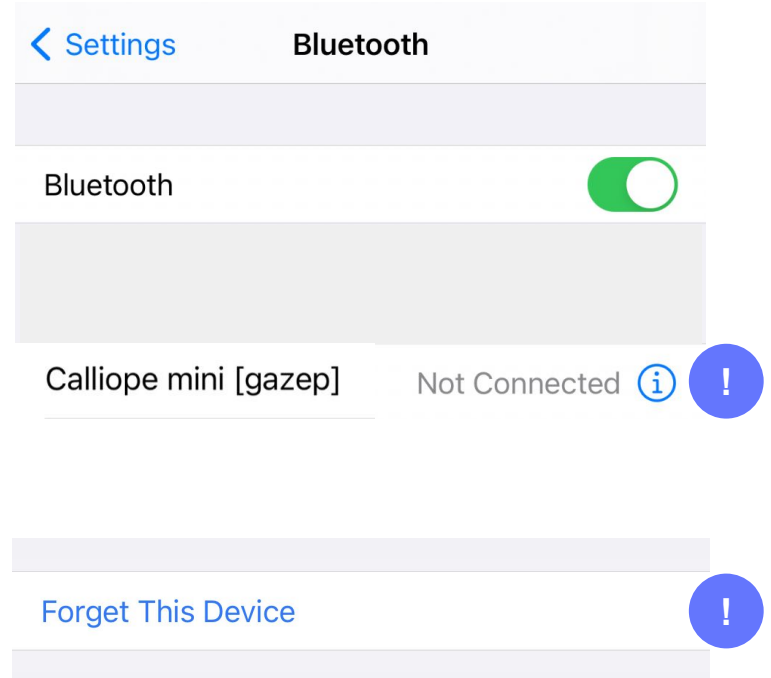


**RECONNECTION FAILED  
AFTER TRANSFER  
IN THE APP**



# BLUETOOTH DISCONNECT

- Open [Settings](#) App
- Open [Bluetooth](#) Settings
- Select Information (*i*) Calliope mini device  
(It might also appear as DfuTarg)
- Select [Forget This Device](#)





# RECONNECT CALLIOPE MINI



CALLIOPE

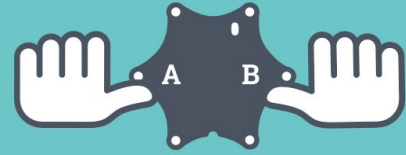
# START PAIRING MODE/ RECONNECT

Show ID pattern

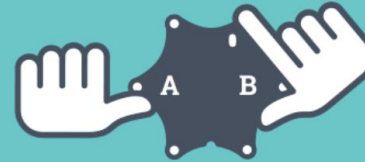
- Press **buttons A+B**
- Press **Reset** button for **1 second**
- Keep **buttons A+B** pressed until animation finished
- **ID pattern** appears



1

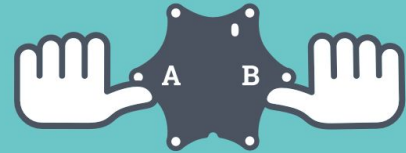


2

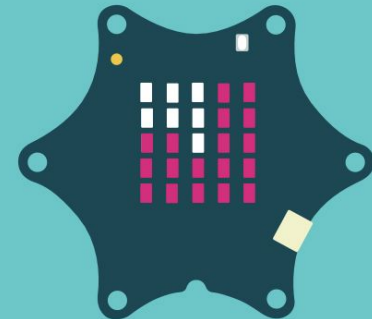


*Reset  
1 second*

3



4



**ID PATTERN ON THE  
CALLIOPE MINI  
CANNOT BE ACCESSED**



# INSTALL START PROGRAMM

Start accessing the **flash (Calliope mini 2.0)** to reinstall the Start program

- Hold down **Reset** button for **5 seconds**
- **Select Start program (25)** - press **button A**
- Program 25 is **selected**
- **Confirm** program 25 - press **buttons A+B**
- Start program is installed



1



*5 seconds*

2



*navigation*

3

1	2	3	4	5
6	7	8	9	10
11	12	13	14	15
16	17	18	19	20
21	22	23	24	25

*selection*

4



*confirmation*

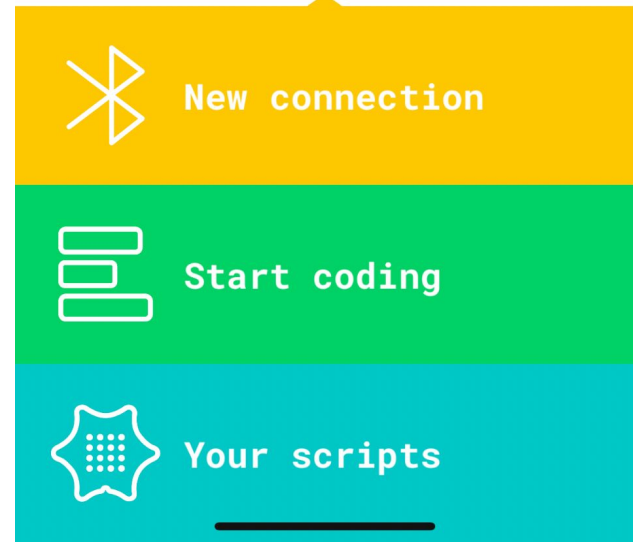
# INSTALL START PROGRAM

Install Start program within the app  
(**Calliope mini 1.x**)

- **restart** App
- select **your scripts**
- transfer **Calliope-mini-Start** program  
(yellow program)



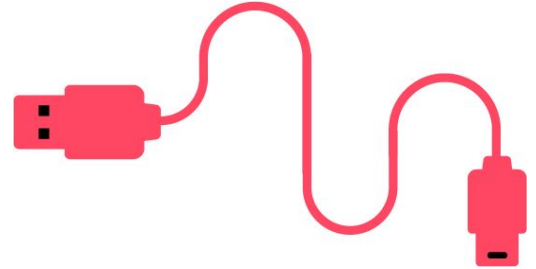
CALLIOPE



# INSTALL START PROGRAM

Install Start program via USB  
(Calliope mini 1.x )

- Connect the Calliope mini to a computer **via USB**
- **Load** Start program  
<https://calliope.cc/en/coding/mobile#startprogram>
- Transfer Start program to the Calliope mini  
[startprogramm.HEX](#)



Calliope mini App ([iOS](#) / [Android](#))

---

[Calliope mini mobil](#)

---

[Flash](#)

---

[Start program](#)





**CALLIOPE**

Bei Rückfragen stehen wir gerne zur Verfügung.  
Du kannst dich unter +49 (0)30 4849 2030 an uns wenden  
oder per E-Mail: [info@calliope.cc](mailto:info@calliope.cc)

**CALLIOPE.CC**